

# Authority Data Warehouse

One single source of data enabling  
powerful analysis and insights



### Instant success, Out-of-the-box

Easy reporting with a report-based naming convention for your restructured data. Out-of-the-box Power BI dashboard templates help you start faster



### Tailored for Authority

Integrated, it creates consistency among different data types from disparate sources



### Improved decision making & business intelligence

Automate, drill down and easily interrogate your up-to-date data



### Auditability & Stability

Ensuring data integrity through implemented controls for roles and responsibilities - Once data is in a data warehouse, it's stable and doesn't change



### Improved System Performance

Diverting reporting away from the live transactional database of Authority



### Get more productive with Power BI

Consolidate data into a single query and generate powerful Power BI dashboards for users across the business

### What is a Data Warehouse?

A Data Warehouse is an enterprise-grade central data repository, designed to hold data from an organisation's systems and optimised for reporting and analysis. Civica's Data Warehouse is built using the multi-dimensional data model to make it easier to understand, query and analyse.

A data warehouse enables reporting and analysis to be conducted on a data store specifically designed for that purpose, without impacting the live transactional database, reducing performance impacts and other overheads associated with using the transactional database for reporting.

### Why choose us?

Choosing the Authority Data Warehouse will enable you to have access to one central reporting data source, optimised to present data from various modules of Authority. Leverage our standard Power BI dashboard templates to get insights faster. It enables a wide range of analytics and reporting options on your data. **Relevant, up-to-date, and accurate insights at your fingertips.**

### Data Warehouse helps users to easily:

- Have access to the same standardised data, allowing them to execute faster, more efficient initiatives
- Team can generate more granular insights and better track performance metrics such as Actuals vs Budget, Work Order Progress, CRM Service Levels, Creditor Payment Schedules
- Process data in near real-time, enabling your team to take decisions on the most recent data
- Create snapshots of business performance from transactional data
- Fully managed and self-driving data warehouse

### Pre-requisites:

- Authority 7.1 or Altitude
- Power BI Pro licence recommended

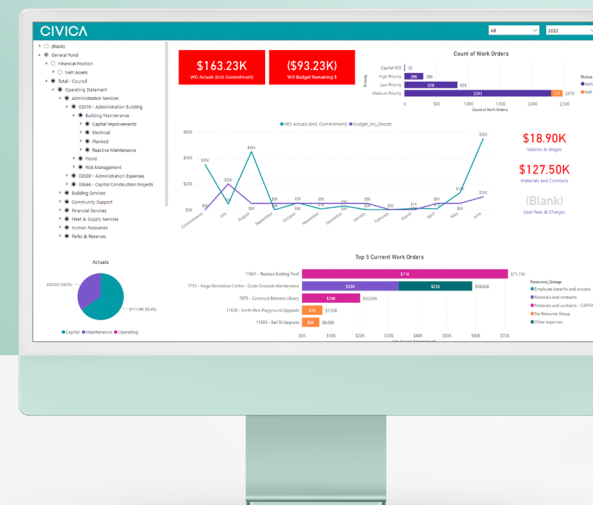
Authority  
Databases  
XML  
Spreadsheets

Data  
Warehouse

Power BI

tableau

X



### Why do we need the Authority Data Warehouse?

- Easily analyse and report on a large amount of data across different timelines and trends
- Simplify report building with intuitive data structure and naming convention
- Improve speed and efficiency of accessing different data sets
- Improve Authority system performance
- Keep an historical record

### What does it change for me in reporting and BI?

Data Warehousing enables better Business Intelligence and decision making:

- A central repository of data from various sources, making it possible to analyse data in a consistent format
- Reporting optimised data structure for all key modules in Authority
- Organising data in a way that makes it easy to understand and analyse
- Reporting and analysis tools, such as Power BI and Excel, allow users to access, analyse, and visualise the data stored in the data warehouse (out-of-the-box Power BI templates)
- Future capability to be extended as the Council's Enterprise Data Warehouse

In summary, Authority Data Warehousing enables decision making by consolidating data, making it easy to understand, analyse, access and report.

