

Authority Connect: Advance

Reduce the risks and inefficiencies of double handling data by updating and creating Asset items from the field, using Authority Connect: Advance

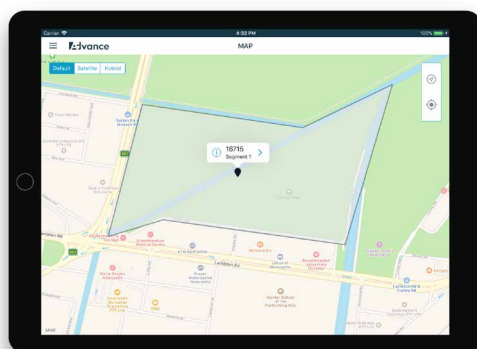
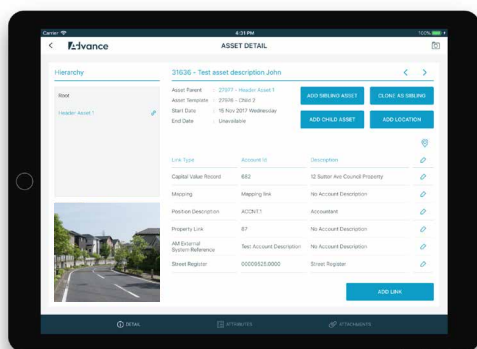
Asset Management Mobile App for Civica Authority

Authority Connect: Advance allows Council Officers to **maintain assets in the field along with relevant documents or attachments**. Advance lets you update or create assets on a mobile device, reducing double handling and paper-based processes. Instant syncing means that **Civica Authority is up to date whenever an asset is updated**.

Authority Connect: Advance allows the management of Asset items while in the field, on a mobile device.

Saving time and avoiding the risks of double-handling.

- ▶ **Easy to use**
- ▶ **Reduce the risks and inefficiencies of double handling data**
- ▶ **Secure access**
- ▶ **Search, download, create and update Assets from a mobile device**
- ▶ **Add image files as attachments**
- ▶ **Import/export GIS data**
- ▶ **View all Assets on a map marked by GPS pins**
- ▶ **Role-based access for added security**
- ▶ **Does not require continuous internet connectivity to operate**



Increase Efficiency



Reduce Risk



Optimise Performance

93%

of surveyed respondents said that mobile compatibility would be useful or extremely useful to their organisation*



Seven reasons to consider Authority Connect: Advance

1. Seamless



Authority Connect: Advance is tightly coupled with Authority. Users can manage Assets in the field, with data moving seamlessly to Civica Authority.

2. Works Offline



Authority Connect: Advance does not require data connectivity to operate in the field. Access and work with the app regardless of whether network coverage is available. Advance submits all data to Authority when it next has access, providing a seamless user experience.

3. Create and Update Assets



Field officers can create new Assets and update existing Assets while in the field. The App validates all data as per template, and ensures that only valid data gets submitted to the Authority server.

4. Secure



Only authenticated users can access Assets, as per their role and permissions only. Council officers can use their Civica Authority credentials to log in and access Authority Connect: Advance.

5. Asset Detail View



Council officers can view or update all necessary information related to their work, in Asset Detail View.

The Asset Detail View includes asset description, hierarchy, location,

attached images, links and attributes.

6. Captures Visual Data



Attach and upload images taken from a camera or device storage as information with an Asset. Advance allows use of the camera on your device to take photos 'in-App.' Images are stamped with date, time and location coordinates, uploaded directly to Authority and can be viewed in Authority after the sync process.

7. Map View



Council officers can view all Assets on map view marked by GPS icon. A simple tap on the icon opens Asset Detail View for the asset. There are three different view modes available for users that officers can change between at any time.

In our latest report in collaboration with **UTS: Institute of Public Policy and Governance**, 93% of local government respondents indicated that mobile compatibility would be useful or extremely useful to their organisation. **Authority Connect: Comply** is a positive step in the journey to mobility for local government and local authorities.

*Visit civica.com to read our report in collaboration with UTS **Changing Landscapes: Digital Transformation - What do local councils need in the digital age?**

