

WanStaX OpenFlow API

OpenFlow Enabled WinPath Data Plane

Product brief

version 2.0



OPEN NETWORKING
FOUNDATION

CIVICA

Transforming the way you work

The explosion in the number of mobile devices and content, server virtualization, and advent of cloud services are among the trends driving the networking industry to re-examine traditional network architectures.

Software Defined Networking (SDN) is an emerging network architecture where network control is decoupled from forwarding and is directly programmable.

SDN aims to deliver a new paradigm of network architecture and management which will dovetail with the trends in computing virtualisation, the rise of cloud services and dynamically changing traffic patterns.

The flexibility and high throughput of Microsemi's Win Path Network processor portfolio makes it an ideal technology choice for network elements that customers need to be 'SDN Ready'.

Civica's WanStaX software portfolio includes the necessary features to support OpenFlow-based forwarding, in parallel with 'traditional' network architectures which makes it easy for enterprises and carriers to progressively introduce Open Flow based SDN technologies when WanStaX is deployed.

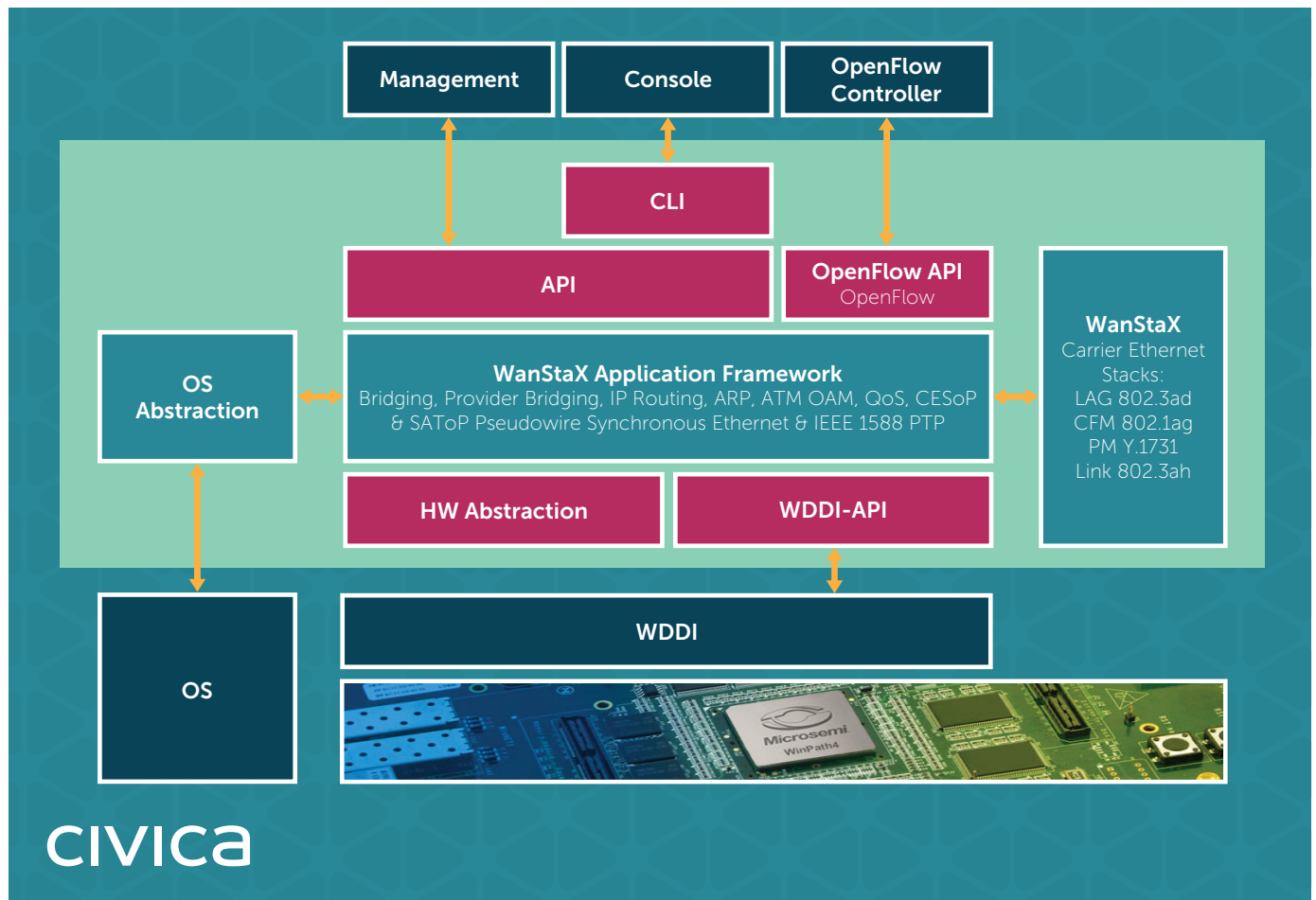
Features

- ▶ OpenFlow-Hybrid switch.
- ▶ All OpenFlow 1.3.4 mandatory features supported.
- ▶ Integration with EOAM, CFM and LAG.
- ▶ VLAN and PBB support.
- ▶ Quality of Service and PCP/DSCP remark support.
- ▶ Advanced metering support.

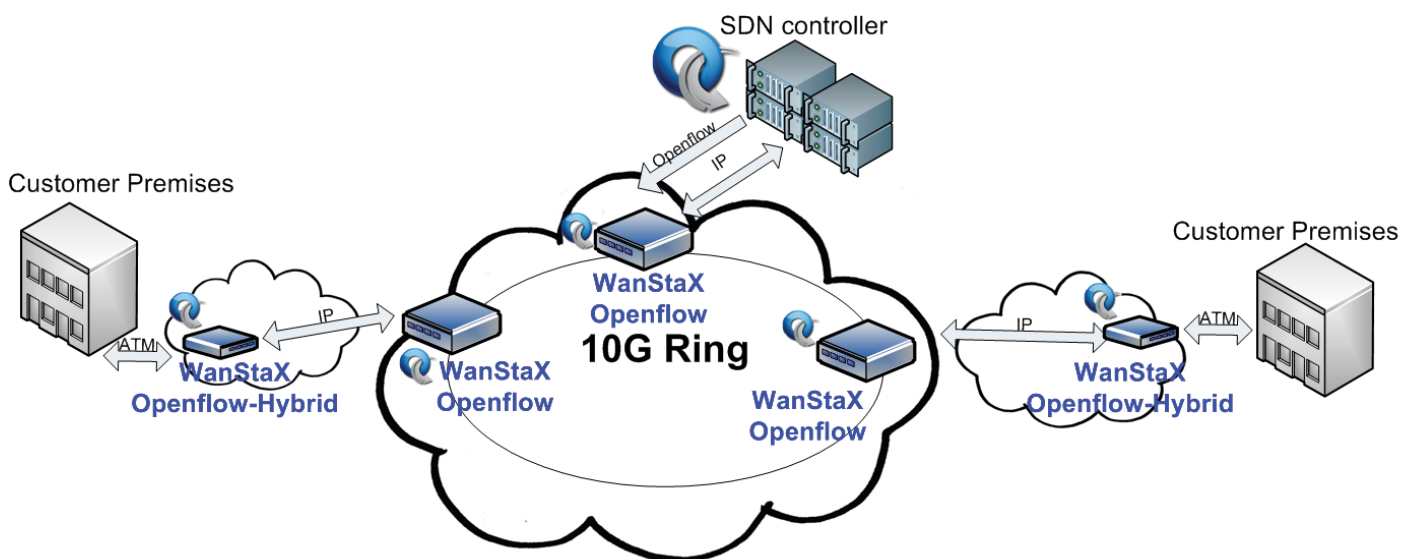
Compatibility

- ▶ Microsemi's WinPath network processor family including WinPath3, WinPath3SL and WinPath4 running WDDI 4.2 or later.

WanStaX Application Framework



Example Diagram of WanStaX OpenFlow



Civica

10 Weavers Court
Belfast
BT12 5GH

Phone: +44 28 9072 5000

Email: telecoms@civica.co.uk

www.civica.com/telecoms

© Civica 2018

All rights reserved. WanStaX® is a registered trademark of Civica. The information in this document is proprietary and confidential to Civica and for its customers' internal use. No part of this document may be reproduced or redistributed in any form without the express written consent of Civica.

Disclaimer

None of the information contained in this document constitutes an express or implied warranty by Civica. The information contained within is subject to change without notice. Civica expressly disclaims all representations and warranties of any kind regarding the contents or use of the information, including, but not limited to, express and implied warranties of accuracy, completeness, merchantability, fitness for a particular use, or non-infringement. In no event will Civica be liable for any direct, indirect, special, incidental or consequential damages, including, but not limited to, lost profits, lost business or lost data resulting from any use of or reliance upon the information, whether or has been advised of the possibility of such damage.



Civica NI has received support from Invest NI under the European Union's Investment for Growth and Jobs Programme. The project(s), will be implemented over the next year, undertaking research and development activities aimed at improving the competitiveness of the business.